

Go4 DN32 - Mechanical Engine Fuel Oil Blender Blending Capacity 3,6 – 7,8 m³/h Blending Range 5-95%

TURNKEY SOLUTIONS

There are many variables to take into account when fitting a blending system and our highly skilled engineers will adapt our system to fit your exact requirements.

TECHNICAL SUPPORT

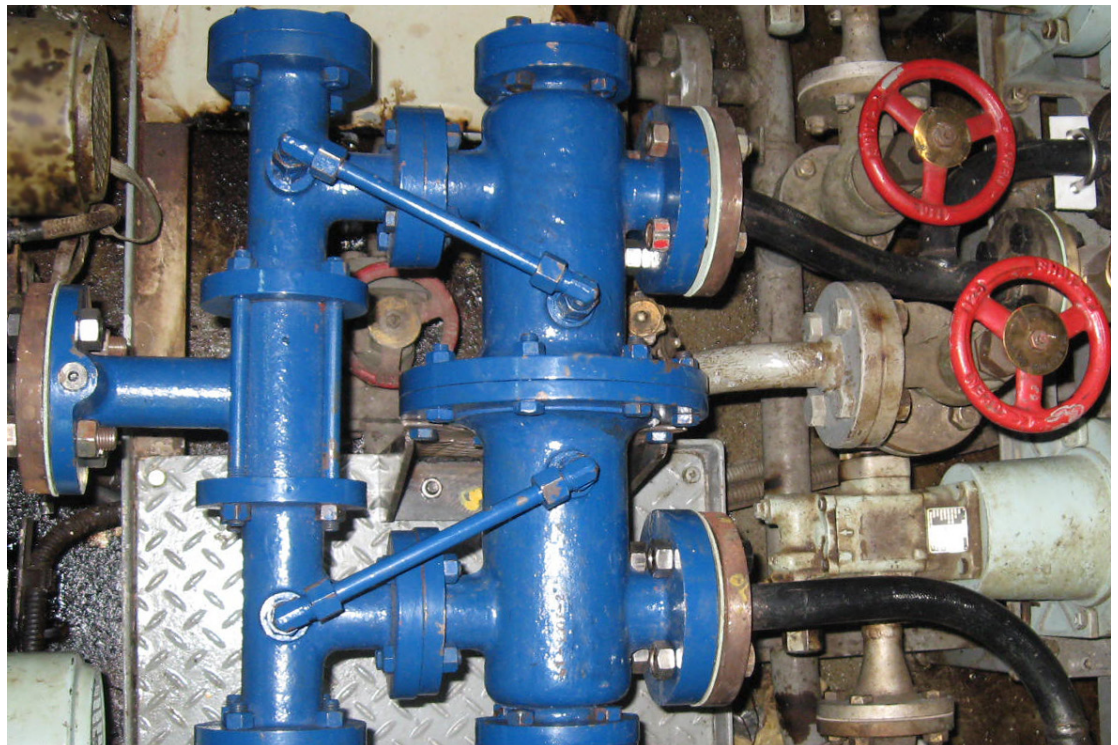
We are with you all the way. Before, during and after the implementation to secure a flawless integration and operation.

ZERO DOWNTIME

As a central part of a bunker delivery system; mechanical stability, toughness and durability is an important aspect of the manufacturing and design philosophy.

For more information on these or other of our products or services please visit us on the Web at:

www.cbi.dk



DN32 Engine Fuel Blender

For blending of two fluids at a predetermined ratio, producing finished engine fuel conforming to IFO or SECA specifications.

To save cost, many vessels are blending their daily consumption of fuel in a blending tank (Day Tank) where the components are intermixed as thoroughly as possible.

This tedious method can now be substituted by In-line" blending where the components are fed in a controlled, simultaneous flow, in the correct ratios, to a blending device which supplies the high quality finished blend.

It is a quick and easy process taking place during normal daily operation, with no need for the extra storage tanks and complicated logistic normally required when doing batch blending.

The Go4 Blender makes a perfect "Viscosity-Blend" with an accuracy of +/-2% to the specification.

Easy to install

With the connecting pipes properly braced there are no need for extra supports – the unit can be mounted as an ordinary valve. And as there are no electric motors, compressed air etc it can be installed in any environment on board vessels.

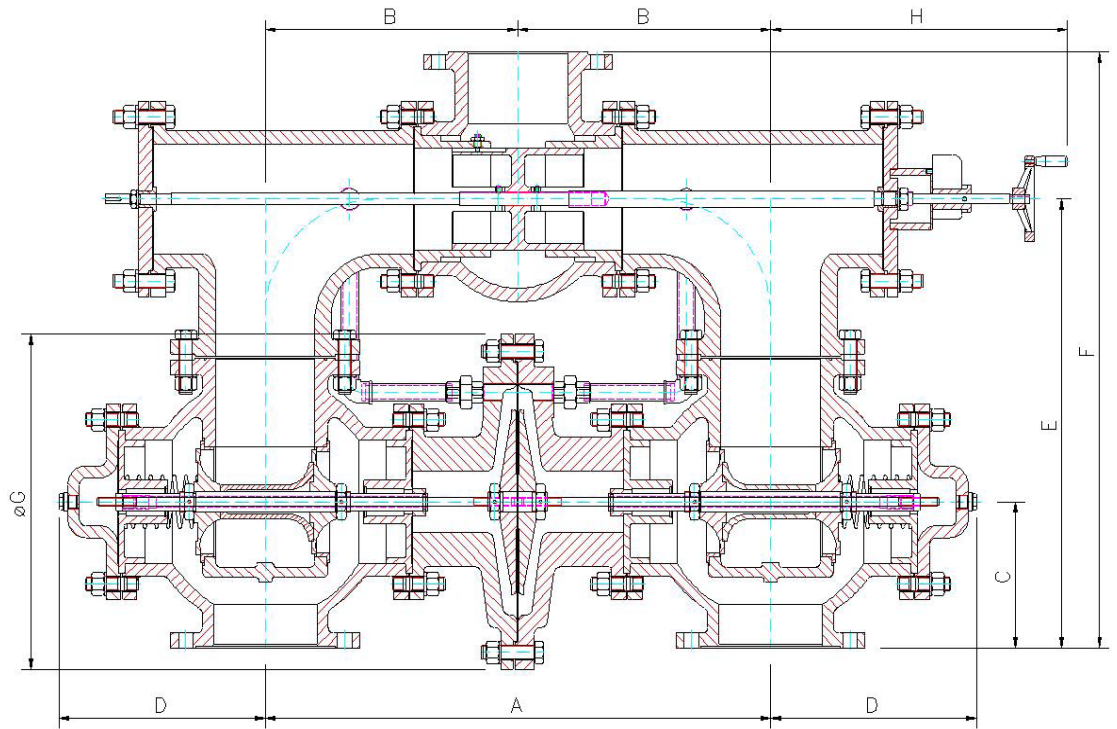
Easy to operate

A hand wheel selects the ratio setting, which is shown on a scale. Once the ratio for the blend is determined, the operator turn the hand wheel to the corresponding setting on the scale.

Technical Specifications

SERVICES AVAILABLE

Consulting Services
Technical Support
Installation and Setup
Maintenance
Warranty

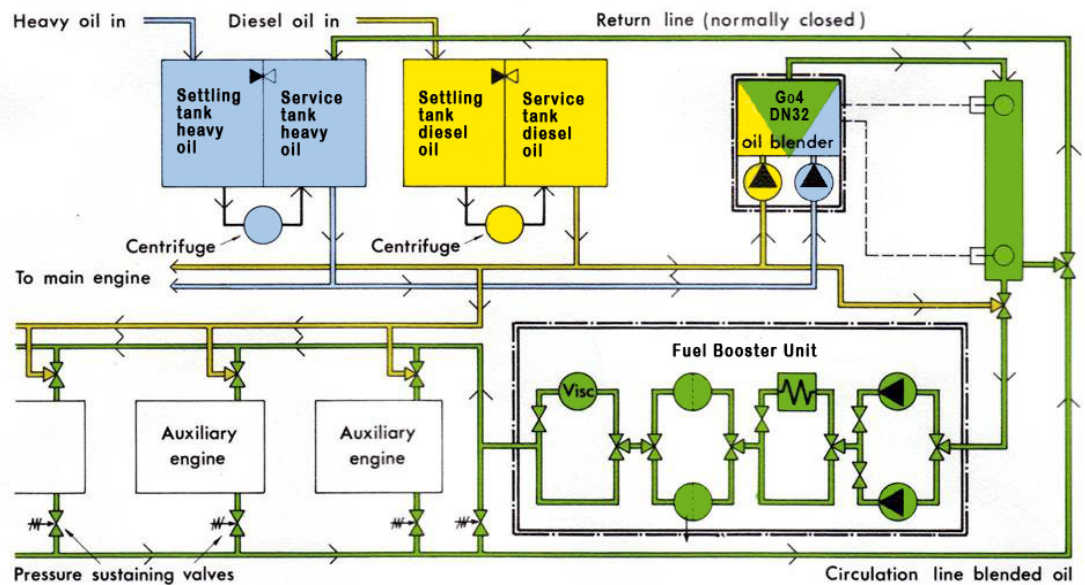


Connections SMS 342	A	B	C	D	E	F	G	H	Weight kg	Total flow litres/min
32	302	156	140	112	333	408	220	190	65	60-130

All measurements are in mm.

The flow rate refers to finished blend at maximum working pressure and ideal conditions.

Installation Schematics (Example)



Go4 Bunker ApS
Lille Blødevej 3
DK-3600 Frederikssund
Denmark
+45 4731 3388
www.cbi.dk